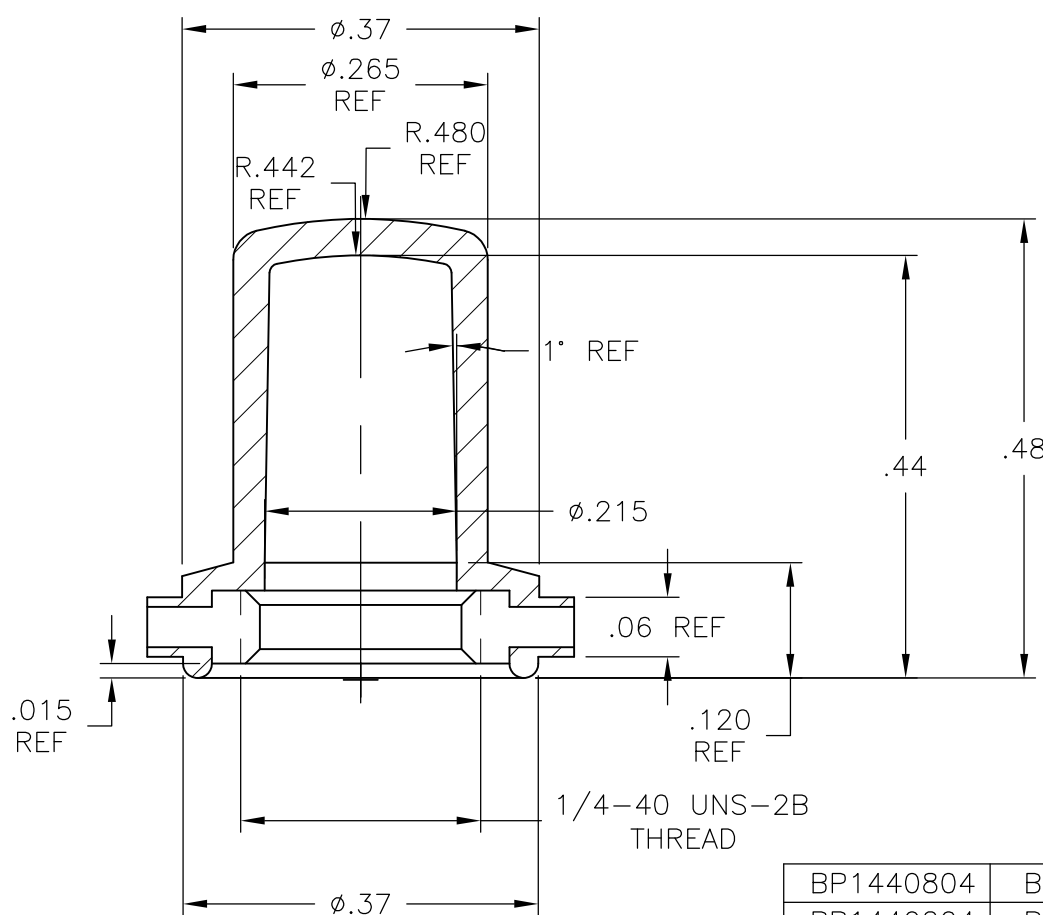
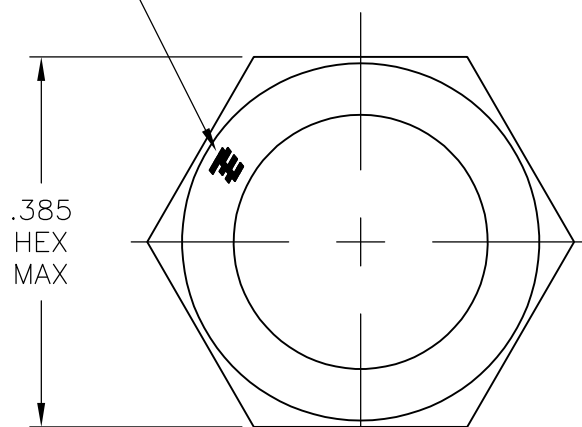


THIS DRAWING IS UNPUBLISHED. RELEASED FOR PUBLICATION  
 © COPYRIGHT BY TYCO ELECTRONICS CORPORATION. ALL RIGHTS RESERVED.

| LOC | DIST | REVISIONS                 |         |     |      |
|-----|------|---------------------------|---------|-----|------|
| P   | LTR  | DESCRIPTION               | DATE    | DWN | APVD |
|     | B2   | REVISED PER ECO-09-008474 | 07APR09 | HMR | MW   |

TE LOGO, RAISED



1. SOME DIMENSIONS MAY VARY DUE TO DIFFERENT COMPOUND SHRINKAGE FACTOR.
2. MINOR FLASH ACCEPTABLE ON INSERT THREAD.
3. BLACK FINISH/NICKEL PLATING INSIDE THREADS REMOVED DUE TO MOLDING PROCESS PERMITTED.
4. RUBBER TO METAL BOND MUST MEET OR EXCEED THE TEAR STRENGTH OF RUBBER.
5. RUBBER OVERLAY PERMISSIBLE OVER HEX FLATS AS SHOWN IN THE DRAWING.
6. COMPONENTS MUST COMPLY WITH THE EUROPEAN DIRECTIVE 2002/95/EC ON RESTRICTION OF THE USE OF CERTAIN HAZARDOUS SUBSTANCES IN ELECTRICAL AND ELECTRONIC EQUIPMENT (ROHS DIRECTIVE).

| BP1440804   | BRASS, NICKEL PLATE PER QQ-N-290 | SILICONE, COLOR GRAY  | 1825610-3   |
|-------------|----------------------------------|-----------------------|-------------|
| BP1440204   | BRASS, NICKEL PLATE PER QQ-N-290 | SILICONE, COLOR RED   | 1825610-2   |
| BP1440004   | BRASS, BLACK OXIDE PER MIL-F-495 | SILICONE, COLOR BLACK | 1825610-1   |
| ALCO NUMBER | HEX NUT MATERIAL                 | RUBBER BOOT MATERIAL  | PART NUMBER |

|  |        |                                |   |                         |     |       |       |       |        |       |     |        |      |                   |               |  |
|--|--------|--------------------------------|---|-------------------------|-----|-------|-------|-------|--------|-------|-----|--------|------|-------------------|---------------|--|
| THIS DRAWING IS A CONTROLLED DOCUMENT.   |        | DWN<br>S SCHLEGEL<br>20FEB2008 | Tyco Electronics Corporation<br>Harrisburg, PA 17105-3608 |                         |     |       |       |       |        |       |     |        |      |                   |               |  |
| DIMENSIONS:<br>INCHES  |        | CHK<br>M WILBOURN<br>2/20/08   | NAME  |                         |     |       |       |       |        |       |     |        |      |                   |               |  |
| TOLERANCES UNLESS OTHERWISE SPECIFIED:   |        | APVD<br>M WILBOURN<br>2/20/08  | 1/4-40 PUSHBUTTON BOOT SEAL                               |                         |     |       |       |       |        |       |     |        |      |                   |               |  |
| <table border="0"> <tr><td>0 PLC</td><td>± -</td></tr> <tr><td>1 PLC</td><td>± -</td></tr> <tr><td>2 PLC</td><td>± .01</td></tr> <tr><td>3 PLC</td><td>± .005</td></tr> <tr><td>4 PLC</td><td>± -</td></tr> <tr><td>ANGLES</td><td>± 5°</td></tr> </table> |        | 0 PLC                          | ± -   | 1 PLC                   | ± - | 2 PLC | ± .01 | 3 PLC | ± .005 | 4 PLC | ± - | ANGLES | ± 5° | PRODUCT SPEC<br>- | RESTRICTED TO |  |
| 0 PLC  | ± -    |                                |   |                         |     |       |       |       |        |       |     |        |      |                   |               |  |
| 1 PLC  | ± -    |                                |   |                         |     |       |       |       |        |       |     |        |      |                   |               |  |
| 2 PLC  | ± .01  |                                |   |                         |     |       |       |       |        |       |     |        |      |                   |               |  |
| 3 PLC  | ± .005 |                                |   |                         |     |       |       |       |        |       |     |        |      |                   |               |  |
| 4 PLC  | ± -    |                                |   |                         |     |       |       |       |        |       |     |        |      |                   |               |  |
| ANGLES   | ± 5°   |                                |   |                         |     |       |       |       |        |       |     |        |      |                   |               |  |
| MATERIAL<br>-  |        | FINISH<br>-                    | APPLICATION SPEC<br>-                                     | SIZE<br>A3              |     |       |       |       |        |       |     |        |      |                   |               |  |
|  |        | WEIGHT<br>-                    | CAGE CODE<br>00779  | DRAWING NO<br>C-1825610 |     |       |       |       |        |       |     |        |      |                   |               |  |
| CUSTOMER DRAWING   |        |                                | SCALE<br>5:1  | SHEET<br>1 OF 1         |     |       |       |       |        |       |     |        |      |                   |               |  |
|  |        |                                | REV<br>B2   |                         |     |       |       |       |        |       |     |        |      |                   |               |  |